

Mittel zur Umsetzung der EUTR und Wirksamkeit



Funded by the LIFE programme of the European Union and UK Aid from the UK government. The European Commission support for the production of this publication does not constitute endorsement of the contents which reflects the views only of the authors, and the Commission cannot be held responsible for any use which may be made of the information contained therein. This material has been funded by UK aid from the UK government; however the views expressed do not necessarily reflect the UK government's official policies.



EUTR knowledge,
tools and training

+ NEPCon
RA-Cert



NEPCon



Preferred by Nature™



NEPCon Sourcing Hub

FREE



Funded by the LIFE programme of the European Union and UK Aid from the UK government. The European Commission support for the production of this publication does not constitute endorsement of the contents which reflects the views only of the authors, and the Commission cannot be held responsible for any use which may be made of the information contained therein. This material has been funded by UK aid from the UK government; however the views expressed do not necessarily reflect the UK government's official policies.



EUTR knowledge,
tools and training

NEPCon Sourcing Hub



Timber



Palm Oil



Beef



Soy

www.nepcon.org/sourcinghub 



Timber



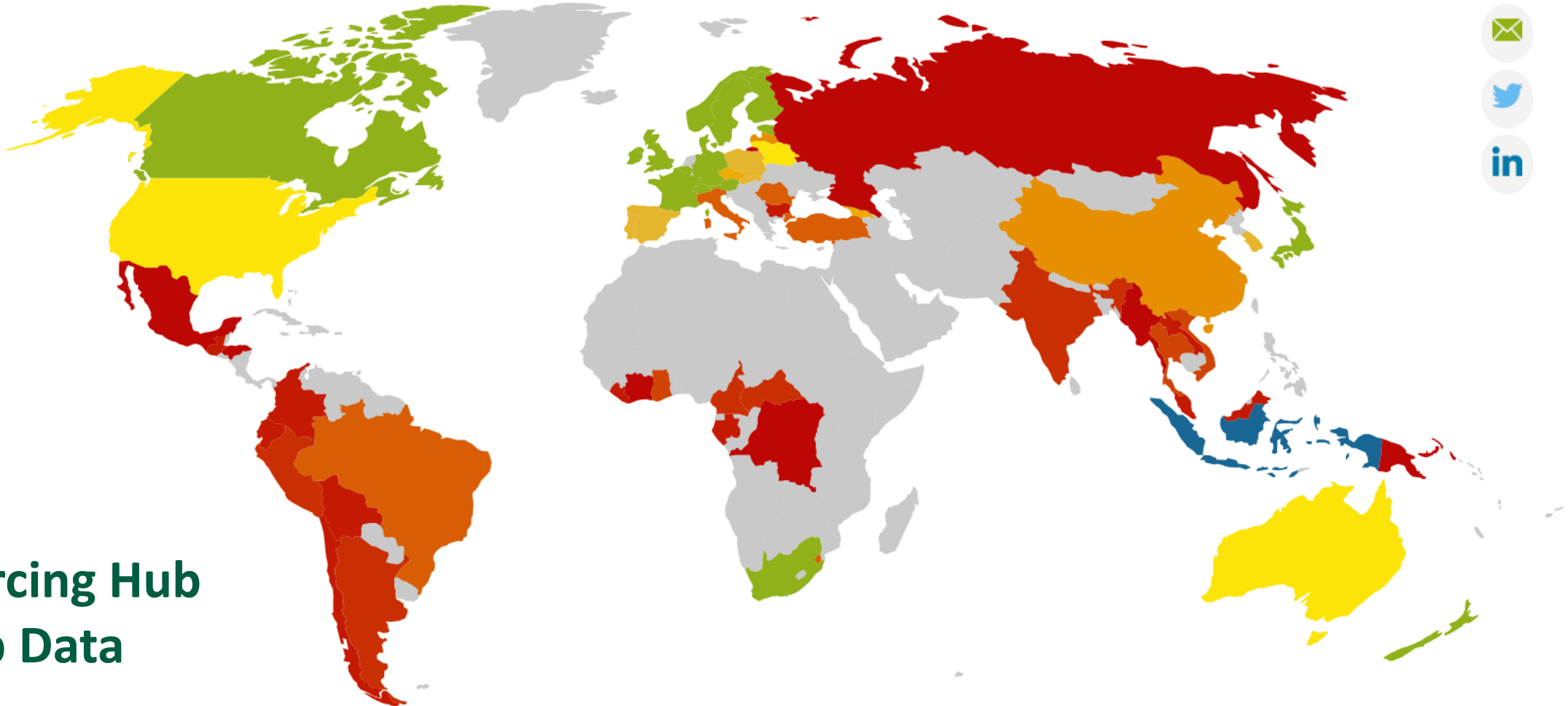
Beef



Soy



Palm Oil



Sourcing Hub
Map Data

78

Country risk assessments

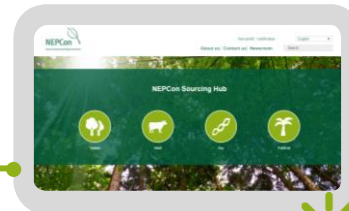
for
timber, palm oil,
beef, and soy
covering supply chains
from all over the world



125+

Guidance and tools

to help
companies
evaluate and manage
the risks
in their supply chain



Funded by:

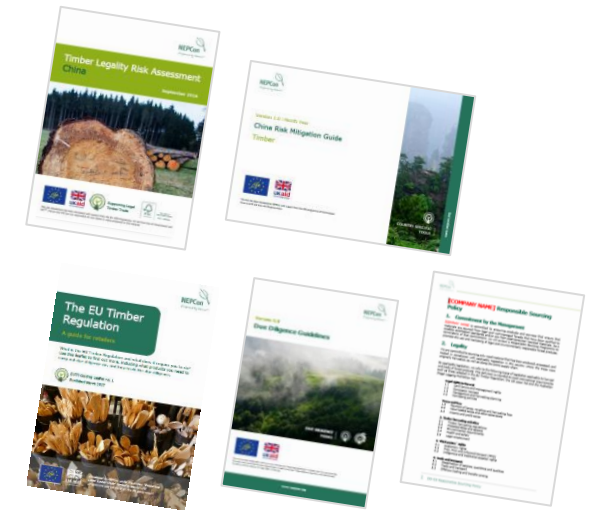
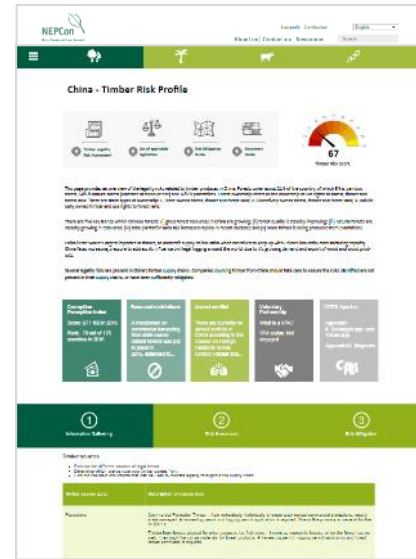
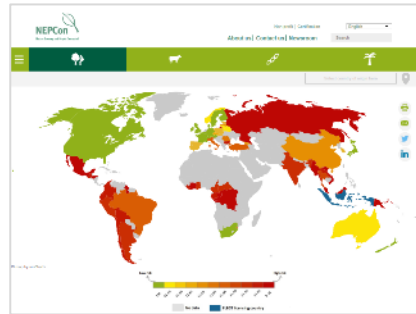
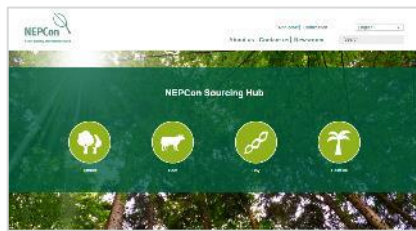


NEPCon Sourcing Hub is funded by UK Aid from the UK government, the LIFE programme of the European Union and DANIDA, Ministry of Foreign Affairs of Denmark. Donors are not responsible for any claims or views presented in this material. The European Commission support for the production of this publication does not constitute endorsement of the contents which reflect the views only of the authors, and the Commission cannot be held responsible for any use which may be made of the information contained therein. The views expressed do not necessarily reflect the UK government's or DANIDA's official policies.

The majority of the Timber Legality Risk Assessments have been funded (in full or in part) by the Forest Stewardship Council as part of their Controlled Wood Centralized National Risk Assessment Programme.

Everything you need for due diligence in one place

FREE



1

SELECT
commodity

2

ACCESS
an overview map of
sourcing risks
+
SELECT
country for details

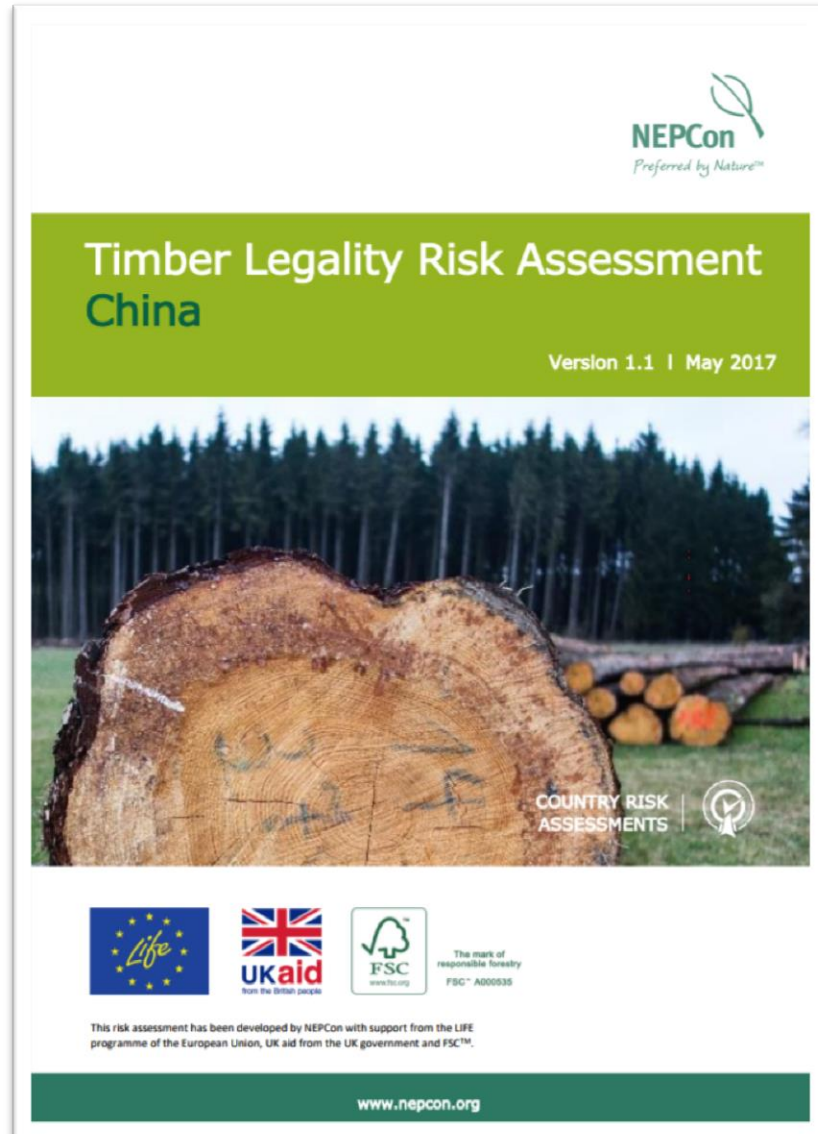
3

VIEW
country detailed risk data
(e.g. risks related to each
type of forest
production...)

4

EXPLORE
a suite of country
guidance and due
diligence tools to
mitigate the risks

Risk assessments...



The **heart** of the Hub



Risk Assessment Framework

Legal rights to harvest



- Land tenure and management rights
- Concession licenses
- Management and harvesting planning
- Harvesting permits

Taxes and fees



- Payment of royalties and harvesting fees
- Value added taxes and other sales taxes
- Income and profit taxes

Timber Harvesting Regulations



- Timber harvesting regulations
- Protected sites and species
- Environmental requirements
- Health and safety
- Legal employment

Trade & transport



- Classification of species/quantities, qualities
- Trade and transport
- Offshore trading and transfer pricing
- Custom regulations
- CITES
- Due diligence and due care

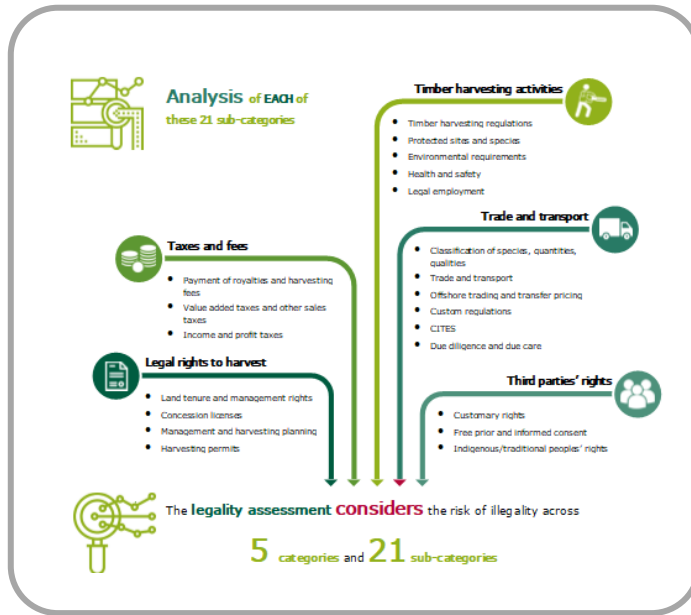
Third parties' rights



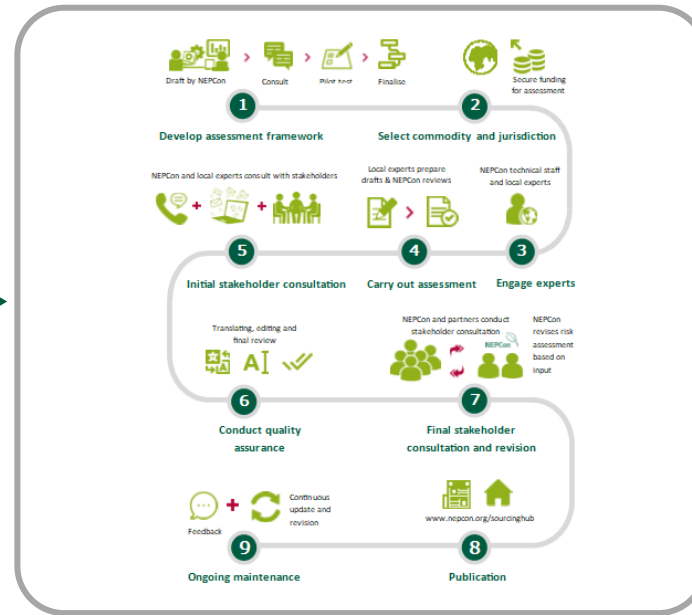
- Customary rights
- Free prior and informed consent
- Indigenous/traditional peoples' rights

Analysis of each of these 21 sub-categories

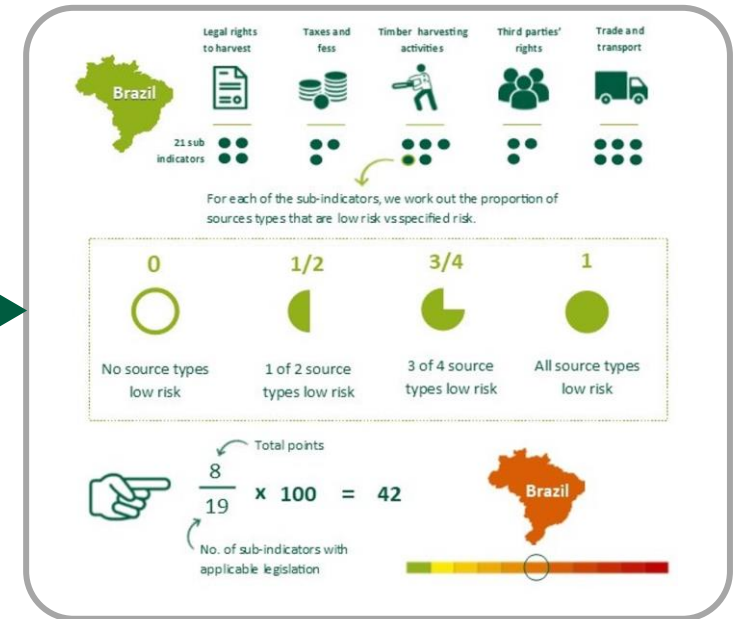
Risk assessments – development process



DEVELOP
the risk assessment framework for the commodity, e.g. defining (sub)categories



CONDUCT
risk assessments
+
CONCLUDE
the risk for each of the sub-categories



CALCULATE
the score for each country
+
COLOUR CODE
in the map

Comprehensive...

Data sources for risk assessments



How do we determine low or specified risk?

Considered low risk

Problems that are:

- Temporary
- Unusual or non-systematic
- Limited in their impact
- Effectively controlled by monitoring and enforcement by efficient and effective government agencies

Considered specified risk

Problems that:

- Affects a wide area and/or causes significant damage and/or continues over a long period of time.
- Indicates the absence or break down of enforcement of the legal system.
- Is not corrected or adequately responded to when identified.
- Has a significant negative impact on society, the production of forest products and other services, the forest ecosystem and the people directly and indirectly affected by forest operations.

So... how do I use the Sourcing Hub?



EUTR knowledge,
tools and training



Operators must conduct due diligence through systems and procedures enabling access to information; risk assessment and risk mitigation.



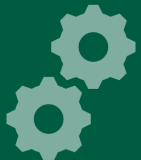
Risk mitigation



Risk assessment



Access to information



Systems and procedures



Systems and procedures
















On the Sourcing Hub

- Information and guidance on how to set up a DDS
- The FULL NEPCon DDS for download
- Templates and tools to set up a DDS





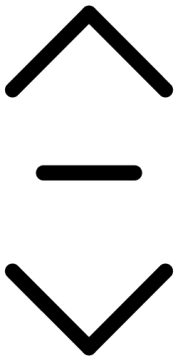
Here you will find t
or set up your own

-  DD-01 NEPCoN Due Diligence Guidelines_1.pdf
-  DD-02 Due Diligence Procedure Template.docx
-  DD-04 Supplier Management Form.xlsx
-  DD-05 Supplier Information Form.xlsx
-  DD-06 Supplier Information Letter.docx
-  DD-07 Supply Chain Mapping Tool.xlsx
-  DD-08 Risk Identification Checklist.xlsx
-  DD-09 Forest Legality Risk Specification Guidelines.docx
-  DD-10 Forest Legality Risk Specification Template.docx
-  DD-11 Due Diligence Guidelines for Forest Managers_0.pdf
-  DD-12 Due Diligence Procedure Template for FMEs.docx
-  DD-13 Certification System Evaluation Checklist.docx
-  DD-15 Product Statement.docx

D
 These guidelines provide step-by-step guidance on
 how to implement a Due Diligence System (DDS),
 including how to use...
[Download pdf \(1.17 MB\)](#)



- > Toolkits overview
- > Risk Assessments tools
- > Due Diligence Toolkit
- > Risk Tools
- > Articles and leaflets
- > Training material and videos
- > External resources





Information gathering



On the Sourcing Hub



General information about:

- Due diligence
- The EUTR
- Illegal logging
- Certification systems
- New technologies and developments

Country specific information about:

- The timber sector
- Corruption, CITES, logging bans, armed conflict and certification
- Sources of timber
- Documents required for legality
- News updates




EUTR knowledge,
tools and training



FLEGT.org reports **Study identifies options for legal timber legislation in China**

A summary report of the Feasibility Analysis of the Incorporation of Timber Legality Requirements into Chinese Laws or Regulations to Forest Products was published. The analysis was undertaken jointly by the EU (DG Environment and European Commission) and China administration and Chinese Academy of Forestry), in the context of the EU – China Bilateral Coordination Mechanism (BCM) on Forest Governance (FLEG).

Read the summary of the report [here](#)  .

October 2017

EFI Briefing : **Introduction to China's Timber Legality Verification System**

The Government of the People's Republic of China and the Chinese forest industry are developing policies, tools, standards and initiatives to combat logging and trade in illegal timber. The ambition is to develop a timber legality framework that meets international and Chinese market requirements for global trade in legal and sustainably sourced forest products, assists Chinese enterprises operating in international markets, and promotes supply chain transparency throughout the timber sector.

...and you can download the Document Guide to find out more:

NEPCoN
Nature Economy and People Connected

Select country of origin here

China Timber Risk Profile

Toolbox

- Timber Risk Assessment
- List of applicable legislation
- Risk Mitigation Guide
- Document Guide

Risk Score: 67

Example of forest tenure certificate

森林、林木、林地状况登记表 No. 1

林地所有权 权利人 森林或林木 所有权利人	林地使用权 权利人 森林或林木 使用权权利人		
坐落	Location		
小地名	林班	小班	
面积	Area	主要树种	Main species
株数	林种	Forest type	
林地使用期	Valid period	终止日期	
四至	GPS location		
注记:			
填证机关 经办人: 负责人:			
年 月 日 年 月 日			

林证字()第 号

Name of the holder

根据《中华人民共和国森林法》规定,本证中森林、林木、林地所有权或者使用权,业经登记,合法权益受法律保护。

特发此证

Seal of issuing authority

发证机关(印)

年 月 日

Issuing time

Risk assessment at a glance

Information gathering



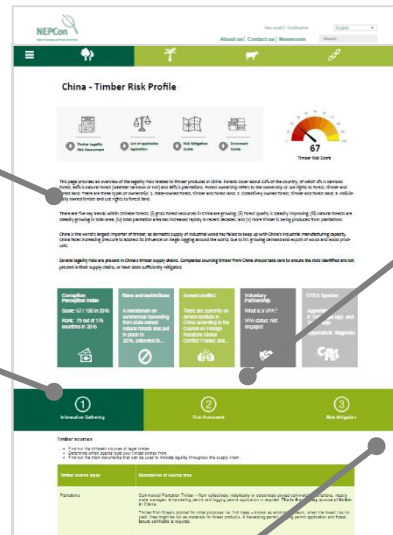
Country source types to help identify the legal sources of timber for a country



Overview of risky species to help reduce risks in the supply chain



Key documents that can indicate legality of timber sourced from a country



Risk assessment

Summary of the key legality risks relevant to timber supply chains from a country



Legal Rights to Harvest



Taxes and Fees



Timber Harvesting Activities



Third Parties' Rights



Trade and Transport



Traceability

Risk mitigation



Clear instructions on how to mitigate risks identified for a specific country



Comprehensive Risk Mitigation Guide and Document Guide



Risk assessment



On the Sourcing Hub

Supplier Audit Report
(DD-14)

Due Diligence Guide
(DD-01)

Due Diligence Manual Template
(DD-02)

Cert Scheme Evaluation Template
(DD-13)

Responsible Timber Policy
template
(DD-03)

Risk Specification template
(DD-10)



Full Due Diligence toolkit
→ Download here

Supplier
Management Form
(DD-04)

Risk Specification Guide
(DD-09)

Supply Chain
information form
(DD-05)

Risk Identification Checklist
Template
(DD-08)

Supply Chain Mapping Tool
(DD-07)

Supplier Information Letter
(DD-06)



EUTR knowledge,
tools and training

1

INFORMATION GATHERING

2

RISK ASSESSMENT

3

RISK MITIGATION



Risk assessment summary

Legal rights to harvest



- Risk of lack of registration and tenure certificates (applicable only to collective forest plantation only)
- Risk of conflicts in relation to land rent (applicable only to collective forest plantation only)
- Risk of lack of management plans and failure to meet the requirements for drafting management plans (applicable to state-owned forest management enterprises)
- Risk of harvesting without permit and unlawful issuing of harvesting permit

Taxes and fees

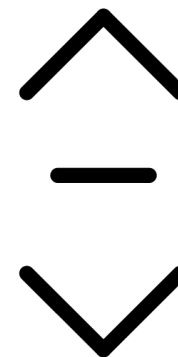


- Risk that value-added taxes (VAT) are not paid appropriately

Timber harvesting activities



- Risk of lack of use of safety equipment
- Risk of lack of employment contracts
- Risk of lack of social security payments





Risk mitigation



General information about:

- Sourcing Certified Materials to mitigate risk on the [Certification and Due Diligence](#) page
- For more detailed supply chains or higher risks, a tool to help you fully map your supply chains ([DD-07 The Supply Chain Mapping Tool](#)).

Country specific information about:

- A summary of the risk mitigation recommendations on the country page; and
- Detailed risk mitigation recommendations in the Risk Assessment

For some countries, we also have

- A [Risk Mitigation Guide](#), giving you a detailed overview of risks in that country and how to mitigate them.
- A [Document Guide](#) that provides you with all required documents and examples of key documents and how to use them in mitigating risks.





INFORMATION GATHERING



RISK ASSESSMENT



RISK MITIGATION



Mitigation recommendations for non-certified materials

Where certified materials are not available, we have two tools to help you mitigate risks for Chinese timber supply chains:

- the [Risk Mitigation Guide](#) gives you a detailed overview of risks in China, and how to mitigate them.
- the [Document Guide](#) provides you with a list of all required documents and examples of key documents and how to use them in mitigating risks.

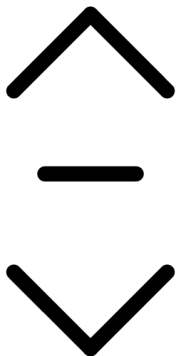
The tools above give you the most information. Below is a summary of our six recommended actions to mitigate the risks associated with timber sources from China that are not third party certified.

1. Fully map your supply chain

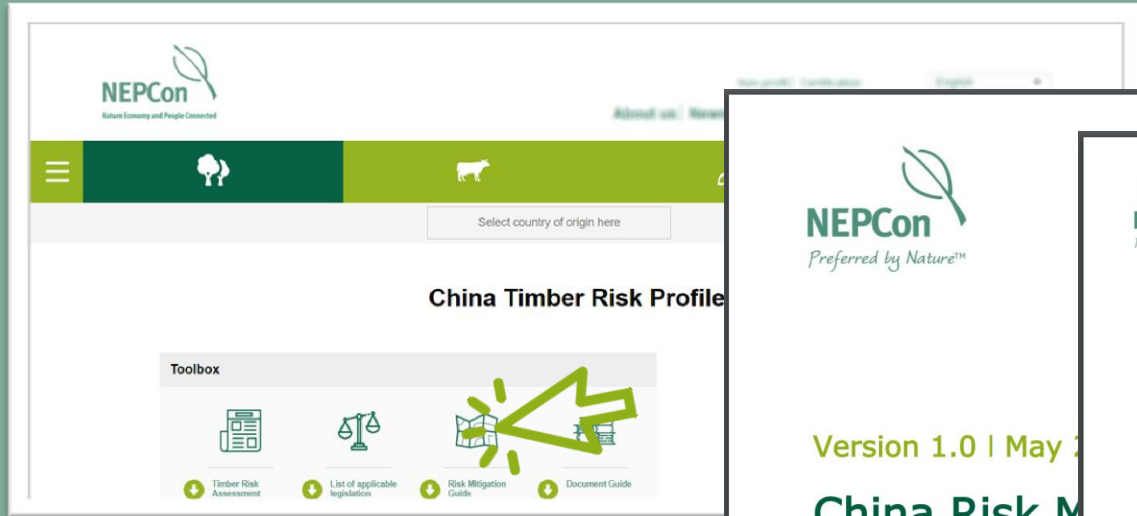
- Our [supply chain mapping tool](#) can help you do this.

2. Obtain and verify documents

- Forest level documents
 - Business Registration Certificate and Tax Registration Certificate
 - Contract
 - Forest Tenure Certificate
 - Harvesting permit



...and you can download the Risk Mitigation Guide to find out more:



NEPCon
Preferred by Nature™

Version 1.0 | May 2023

China Risk Mitigation Guide Timber

This tool has been developed by NEPCon with support from the European Union and UK aid from the UK government.

NEPCon
Preferred by Nature™

Customs Regulations

Risk	Applicable to	Indicator of legal compliance	Potential mitigation actions	How to verify legal compliance (verifier)
Mis-/ under reporting on customs declarations	All timber sources	Products shall be correctly classified (type, HS customs code, species, quantities, qualities, etc.).	Review and verify documents Check information on all import/ export documentation (including Customs Declaration Registration Approval Certificate and phytosanitary certificate (where applicable)) and verify that information corresponds to material received.	Find relevant key document examples in the China Document Guide <ul style="list-style-type: none"> Customs Declaration Registration Approval Certificate Phytosanitary certificate (where applicable)

13 China Forestry Risk Mitigation Guide | Version 1.0

Everything you need for due diligence **in one place**





FREE quarterly newsletter

- Update you on all the developments of the Sourcing Hub in the previous 3 months, including new tools and articles.
- Share important legality news
- Bring insights and information from industry and thought leaders direct to you.



EUTR knowledge,
tools and training

NEPCon support

Evaluation (gap analysis) of your due diligence system and performance

We evaluate your systems and their implementation using our LegalSource™ Standard as the benchmark. This process identifies potential gaps or weaknesses in your current systems compared to timber market regulations and your own policies. We deliver the results in clear language and accessible format including a set of recommendations for actions that strengthen your system.

A

Due diligence training

Our LegalSource Kickstarter Course is tailored towards companies wishing to implement the free LegalSource Due Diligence System or adapt and use the LegalSource tools within their own system. Our comprehensive LegalSource Expert course equips participants with a higher level of knowledge and build skills for conducting legality verification audits. In addition, we can provide tailored training for your staff or suppliers.

B

Supplier evaluation services

As part of our DDS implementation support, we can assist you directly in mitigating risks in your supply chains. For example, we offer to verify the readiness of your suppliers to provide the necessary access to information, or evaluate the effectiveness of risk mitigation actions carried out by your suppliers. This can be complemented by supplier verification services or training for your suppliers and in-house staff.

C

On-going support

We offer advisory services and regular evaluations where we identify strengths and weaknesses of your practices and provide our recommendations for appropriate actions to address any weaknesses. Our structured feedback helps you assure consistent and effective implementation of your due diligence system across your company and supply chains.

D

Timber testing

As part of our services NEPCon collaborates with laboratories that can provide a range of timber testing services, such as DNA testing, microscopic fibre analysis and stable isotope testing. These methods may be used in different cases, e.g. to identify species, or origin of material samples.

E



EUTR knowledge,
tools and training

Vielen Dank.

Find out more at nepcon.org/sourcinghub 



Michael Kutschke

Regionalleiter Deutschland, Österreich,
Schweiz

mku@nepcon.org | + 49 176 909 48 964



EUTR knowledge,
tools and training